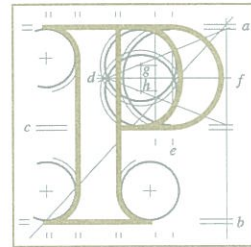


Our Ref: 06S.JA0040
P.A.Reg.Ref:

Your Ref: 1639/LTR/001



An
Bord
Pleanála

Paul Keogh
Paul Keogh Architects,
Cathedral Court,
New Street,
Dublin 8.

29th March 2018

Re:

Dublin Mountain Visitors Centre and all associated works
in the:
Townlands of Mountpelier, Killakee and Jamestown in South Dublin.

Dear Sir,

Enclosed for your information are two copies of five submissions received from John Hoolahan, An Taisce, Fintan O'Kelly, Shay Murphy and John Lawlor by the Board in relation to the above mentioned proposed development.

Please ensure that one copy of these submissions is kept available for inspection by the public.

If you have any queries in relation to the matter please contact the undersigned officer of the Board.

Please quote the above mentioned An Bord Pleanála reference number in any correspondence or telephone contact with the Board.

Yours faithfully,

Kieran Somers
Executive Officer
Direct Line:01-8737107

Encls.

el05.ltr