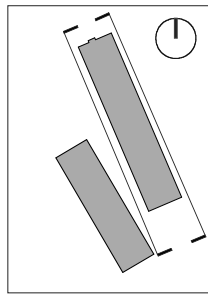


**LEGEND & GENERAL INFORMATION**

- ⊕ GROUND / FLOOR LEVEL INDICATOR
- SECTION LINE INDICATOR
- ▶ REVISION BOX INDICATOR
- FFL 0.0 LEVEL INDICATOR
- ① SITE NOTICE LOCATION
- SITE BOUNDARY LINE
- EXISTING TREE
- NEW TREES



CONTRACTOR TO CHECK AND VERIFY ALL BUILDING AND SITE DIMENSIONS, LEVELS AND SEWER INVERT LEVELS AT CONNECTION POINTS BEFORE WORK STARTS

DRAWINGS TO BE READ IN CONJUNCTION WITH CIVIL & STRUCTURAL ENGINEERS AND WITH LANDSCAPE ARCHITECTS AND OTHER SPECIALIST DRAWINGS, DETAILS AND SPECIFICATIONS

**OUTLINE SPECIFICATION**

**FOUNDATIONS**  
REINFORCED CONCRETE FOUNDATIONS TO ENGINEER'S DETAIL & SPECIFICATION

**STRUCTURE**  
TIMBER / STEEL / CONCRETE STRUCTURE TO ARCHITECT'S / ENGINEER'S DETAIL & SPECIFICATION

**FLOORS**  
IN-SITU / PRE-CAST REINFORCED CONCRETE FLOOR SLABS TO ENGINEER'S DETAIL

**EXTERNAL WALLS**  
TIMBER / STEEL / CONCRETE STRUCTURE TO ARCHITECT'S / ENGINEER'S DETAIL & SPECIFICATION

**EXTERNAL WALL FINISHES**  
SELECTED STONE / TIMBER / CORTEN STEEL FINISHES TO ARCHITECT'S SPECIFICATION. REFER TO ELEVATION DRAWINGS FOR LOCATIONS.

**WINDOWS & DOORS**  
WINDOWS: TRIPLE-GLAZED TIMBER / ALUMINIUM COMPOSITE WINDOWS TO MANUFACTURER'S SPECIFICATION AND DETAIL.

**DOORS**  
ALUMINIUM / HARDWOOD DOORS TO ARCHITECT'S LATER SPECIFICATION AND DETAIL.

**ROOF FINISH**  
BAUDER OR EQUIVALENT GREEN ROOF SYSTEM TO ARCHITECT'S LATER SPECIFICATION

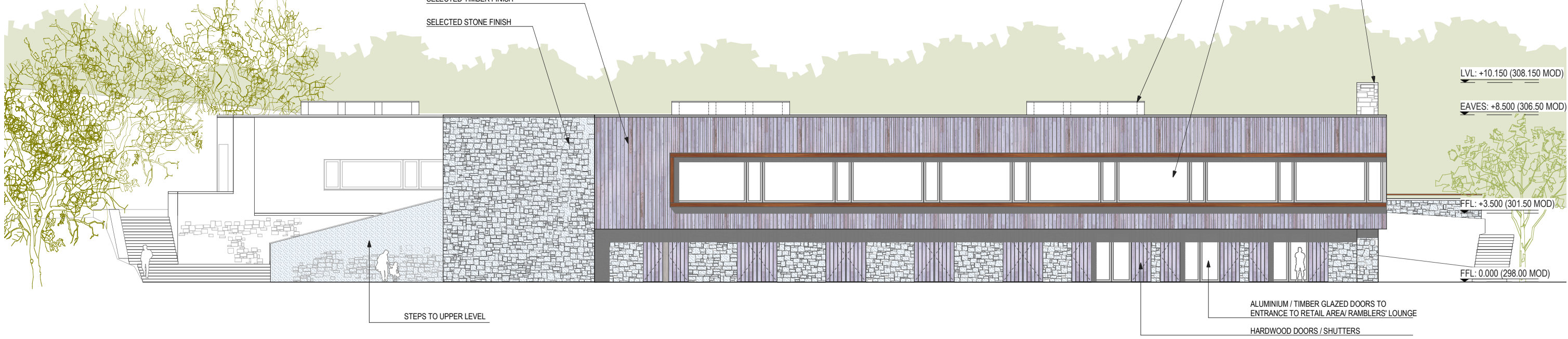
**ROOFLIGHTS**  
SEALED DOUBLE GLAZED UNITS TO MANUFACTURER'S DETAIL.

**RAINWATER GOODS**  
ALUMINIUM GUTTERS AND DOWNPIPES TO ARCHITECT'S LATER SPECIFICATION.

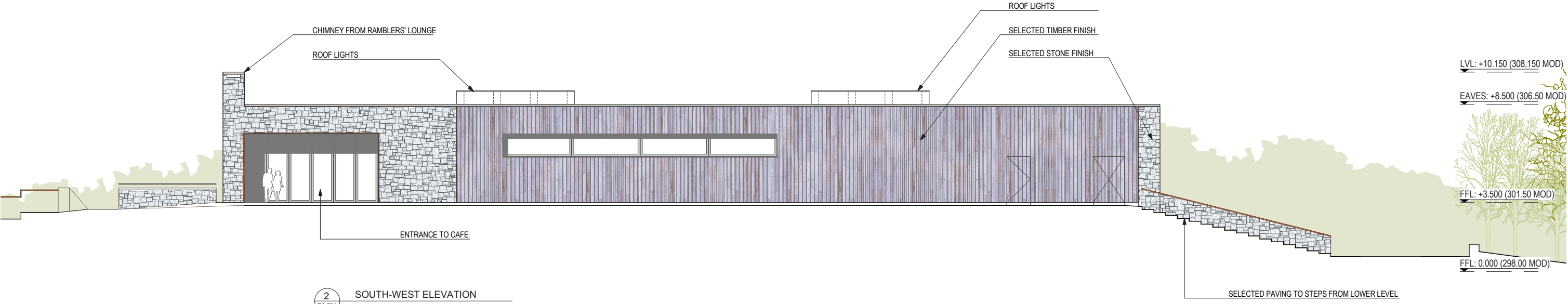
**LANDSCAPING**  
REFER TO LANDSCAPE DRAWINGS.

**GATES**  
GALVANISED / TIMBER CLAD STEEL FRAME GATES TO ARCHITECT'S LATER DETAIL.

**DRAINAGE**  
INTERNAL STACKS TO FOUL AND ALL DRAINAGE TO ENGINEER'S SPECIFICATION AND DETAIL.



1 NORTH-EAST ELEVATION  
PA-004



2 SOUTH-WEST ELEVATION  
PA-004


REVISIONS	STATUS	DRAWN	CHECKED
A	31/07/17 FA ISSUED FOR PART 10 PLANNING APPROVAL	BNM	PK

PROJECT: DUBLIN MOUNTAINS VISITOR CENTRE  
 DRAWING: PROPOSED VISITOR CENTRE ELEVATIONS 1/4  
 JOB NO: 1639 CLIENT: SDCC  
 DATE: JULY 2017 SCALE: 1: 200 (A3)  
 PAUL KEOGH ARCHITECTS, CATHEDRAL COURT, NEW ST., DUBLIN 8.  
 TEL NO: 01 6791551 FAX NO: 01 6793476 E-MAIL: info@pka.ie  
**DRAWING NO.: 1639 / PA / 004 / A**



STATUS : PR - PRELIMINARY ISSUE; FI - FOR INFORMATION; FA - FOR APPROVAL; FP - FOR PRICING; FC - FOR CONSTRUCTION

NOTIFY ARCHITECT OF ANY DISCREPANCIES - CHECK DIMENSIONS ON SITE - DO NOT SCALE USE FIGURED DIMENSIONS ONLY - COPYRIGHT RESERVED - PAUL KEOGH ARCHITECTS ©